

TRANSITION HANDICAPS

This week we are looking at the how the new handicap index will be calculated from our previous rounds and what the predicted impact from our existing handicap will be.

Transition Handicaps

In order to move from **CONGU** to **WHS** handicaps, all players' current Handicap Records will be reprocessed using the WHS principles. The calculation will identify the best 8 of the last 20 Qualifying Scores, if posted since January 2018, and factor in:

- The adjusted Gross Score (Score Differential)
- The Course Rating (or SSS)
- Any PCC (or CSS) adjustments
- The Slope Rating of the tees played

The following slides give more information about the calculation and examples of how it might affect different types of player.

Please Note: some of the terminology used in the slides has changed since the slides were originally created.

If a player has submitted **less than 20 scores in the last 2 years**, the calculation will be done in a similar manner to the method of allocating new handicaps, as shown below.

Players will be able to know their expected **Transition Handicap** and their **Low Handicap Index (Anchor Point)** when the handicapping software is updated around October 2020.

Players are encouraged to submit plenty of scores between now and November 2020 so that their Transition Handicap Index is a good reflection of current playing ability. 9 hole scores are acceptable.

If less than 20 Qualifying Scores posted in the last 2 years

- 3 scores: lowest score -2
- 4 scores: lowest score -1
- 5 scores: lowest score
- 6 scores: average of lowest 2 scores -1
- 7 to 8 scores: average of lowest 2 scores
- 9 to 11 scores: average of lowest 3 scores
- 12 to 14 scores: average of lowest 4 scores
- 15 to 16 scores: average of lowest 5 scores
- 17 to 18 scores: average of lowest 6 scores
- 19 scores: average of lowest 7 scores
- 20 scores: average of lowest 8 scores

If a player has **no Qualifying Scores posted in the last 2 years**, the Transition Handicap will be calculated on the basis of the 3 lowest scores being equal to their current playing handicap. So a player with a 20 handicap will have scores of 20, 20

and 20 on their Scoring Record and their handicap at Transition will be $(20 - 2) = 18$.
So there's an incentive to get at least 3 Qualifying Scores in by November!

TRAINING & EDUCATION

World Handicap System 2020: Transition

In order to transition from CONGU to WHS we have to take a player's current handicap record and reprocess it using the WHS principles.

To do this calculation we need the following information:

- The adjusted gross score.
- The course rating or SSS.
- Any CSS adjustments.
- Slope rating of tees being played.

Where we don't have the Slope Rating we will use the GB&I average of 125.

This information allows us to establish the Gross Differential to be used as part of the averaging calculation.



TRAINING & EDUCATION

World Handicap System 2020: Transition

Example:

- The adjusted gross score. = 94
- The CR or SSS. = 73
- Any CSS adjustments. = 0
- Slope rating of tees being played. = 125

$$\text{Handicap Differential (HD)} = 113/\text{slope} * (\text{adj Gross Score} - \text{CR} - \text{CCA})$$

$$\text{Handicap Differential (HD)} = 113/125 * (94 - 73 - 0)$$

$$\text{Handicap Differential (HD)} = 19.0$$



World Handicap System 2020: Transition



Eddy
Very Consistent,
Always been the
same handicap



Georgia
Since starting golf
has continued to
improve

Derek
Declining in
age and
ability



Justin
Elite Golfer
Best form of
his life



World Handicap System 2020: Building on Knowledge

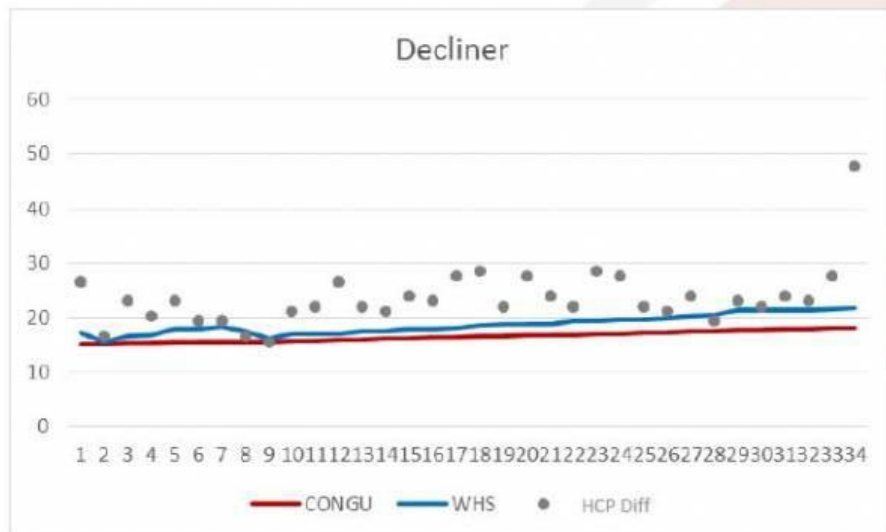


Derek

Current CONGU
Hcp = 18.1

Potential WHS
Index = 21.8

Difference = 3.7



World Handicap System 2020: Building on Knowledge

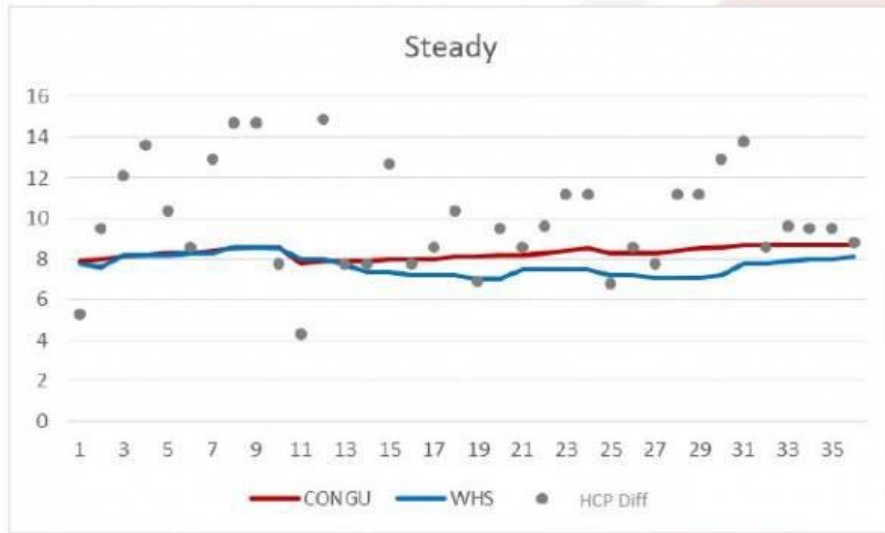


Eddy

Current CONGU
Hcp = 8.7

Potential WHS
Index = 8.1

Difference = -0.6



World Handicap System 2020: Building on Knowledge

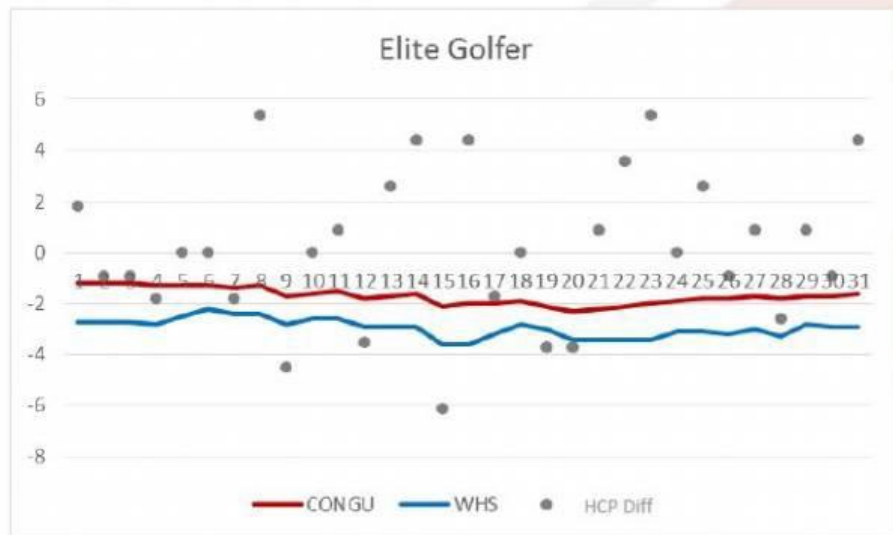


Justin

Current CONGU
Hcp = -1.6

Potential WHS
Index = -2.9

Difference = -1.3



World Handicap System 2020: Building on Knowledge



Georgia

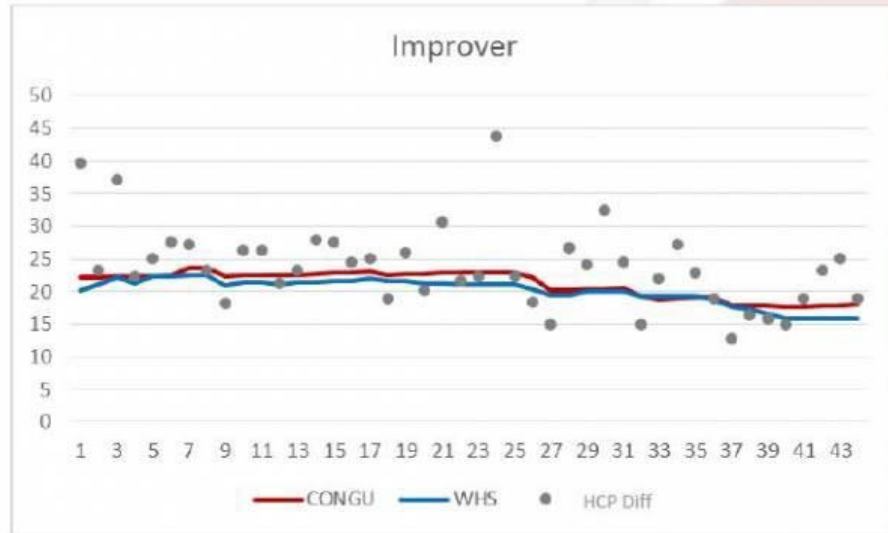
Current CONGU

Hcp = 18

Potential WHS

Index = 15.9

Difference = -2.1



World Handicap System 2020: Building on Knowledge

One thing is for sure....



It is going to be very difficult to predict how a players handicap might Change under WHS.

- 6 and below** – Might go down by 1 or stay the same
- 6 – 12** - Might go up or down by 1 but could stay the same
- 12 – 18** – Might stay the same or go up by 1
- 18 -24** – Might go up by 1 or 2 strokes
- 24 +** - Might go up by 2 or 3 strokes

Decliners will go up more than Steady Players

